

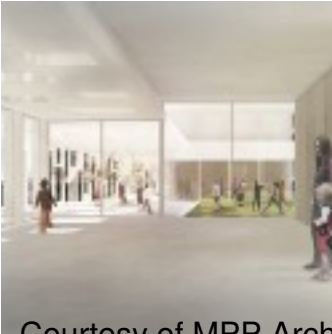


Courtesy of MPP Architekten (Kontou Calliope)

Located on top of a plateau, which is abruptly ended by a sloped edge, the strong topographical element of the Riethüsli Primary School leads to a severe breaking point between the site and its surrounding context. Designed by [MPP Architekten](#), the aim of the concept is to let the school act as an urban communicator. More images and architects' description after the break.



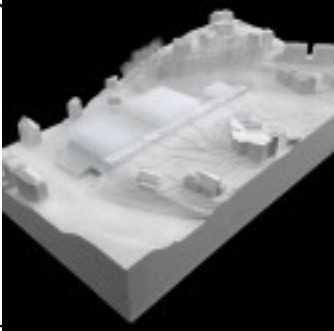
Courtesy of MPP Architekten



Courtesy of MPP Architekten



Courtesy of MPP Architekten



model



site plan



plan 01



plan 02



plan 03



elevation



Section 01



section 02



detail section